

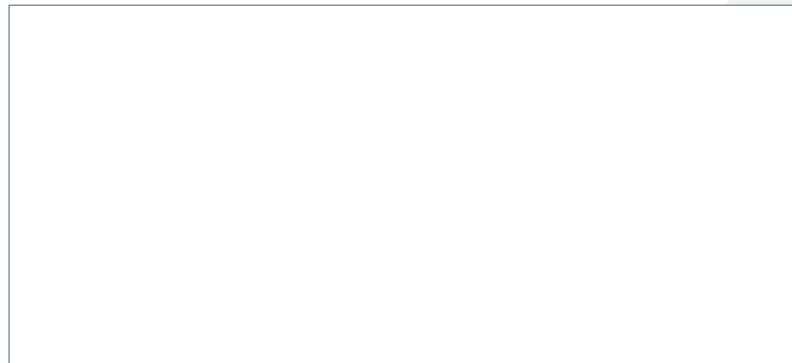


## CX 75 SPECIFICATION



- ◆ Engine: Kohler, 75 hp (2.5 litre)
- ◆ Emissions class: Tier 4 final
- ◆ Length: 3680 mm (145 in)
- ◆ Width: 1150 - 1560 mm (45 - 61.5 in)
- ◆ Height: 1980 - 2040 mm (78 - 80 in)
- ◆ Wheelbase: 1900 mm (75 in)
- ◆ Unladen weight: 2200 - 2500 kg (4850 - 5512 lb)
- ◆ Axle capacity, front: 2500 kg (5512 lb)
- ◆ Axle capacity, rear: 2500 kg (5512 lb)
- ◆ Gross vehicle weight: 3500 - 4000 kg (7716 - 8818 lb)
- ◆ Outer turning radius: 2938 - 3134 mm (115 - 123 in)
- ◆ Maximum speed: 40 km/h (25 mph)
- ◆ Load-sensing PTO hydraulics front & rear, with optional front mechanical PTO
- ◆ Hydraulic flow up to 100 litres (26.4 gal), operating pressure up to 220 bar (3190 psi)

Your local authorised dealer is:



- 🏠 Multihog Global Headquarters, Finnabair Business Park, Dundalk, Co. Louth, Ireland.
- ✉ info@multihog.com
- ☎ +353 42 9386738 / 443 852 1842 (US/CA)
- 🌐 www.multihog.com

**CX 75**

Features &amp; Technical Specification

# CX75

# THE FEATURES



- 1 Heavy duty tractor, ideal for snow clearing, grass mowing, sweeping, pressure washing and much more.
- 2 75 hp Kohler engine, meeting tier 4 final emissions standards without requiring a particulate filter.
- 3 Ergonomic joystick-controlled hydraulics for easy operation.
- 4 Spring and damper suspension for smooth drive and ultimate operator comfort.
- 5 Articulated body with compact width for easy operation on sidewalks and in narrow areas.
- 6 EU type-approved tractor with gross vehicle weight of 3500 - 4000 kg (7716 - 8818 lb).

# POWER, COMFORT & INNOVATIVE DESIGN



One Machine - One Operator - Endless Applications



MXC SPECIFICATION

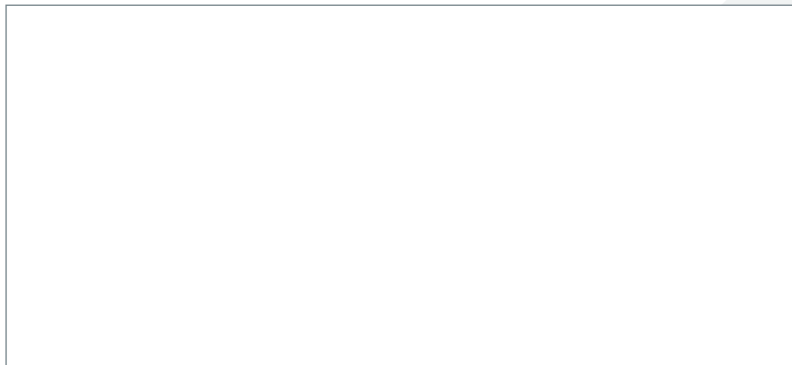
- ◆ Engine: Deutz
- ◆ Power: 130 hp (100 KW)
- ◆ Emissions class: Stage V (Tier 4 final)
- ◆ Length: 4030 mm (158.6 in)
- ◆ Width: 1300 - 1700mm (51 - 67 in)
- ◆ Height: 2170 - 2220 mm (85.4 - 87.4 in)
- ◆ Wheelbase: 2300 mm (90.5 in)
- ◆ Unladen weight: 3400 kg (7496 lb)
- ◆ Gross vehicle weight: 7000 kg (15,432 lb)
- ◆ Axle capacity, front: 3500 kg (7716 lb)
- ◆ Axle capacity, rear: 4500 kg (9920 lb)
- ◆ Load-sensing PTO hydraulics front & rear
- ◆ Hydraulic flow up to 120 l/min (31.7 gpm)
- ◆ Operating pressure up to 350 bar (5076 psi)



MX SPECIFICATION

- ◆ Engine: Deutz
- ◆ Power: 130 hp (100 KW)
- ◆ Emissions class: Stage V (Tier 4 final)
- ◆ Length: 4030 mm (158.6 in)
- ◆ Width: 1530 - 1700mm (60 - 67 in)
- ◆ Height: 2170 - 2220 mm (85.4 - 87.4 in)
- ◆ Wheelbase: 2300 mm (90.5 in)
- ◆ Unladen weight: 3460 kg (7628 lb)
- ◆ Gross vehicle weight: 7000 kg (15,432 lb)
- ◆ Axle capacity, front: 3500 kg (7716 lb)
- ◆ Axle capacity, rear: 4500 kg (9920 lb)
- ◆ Load-sensing PTO hydraulics front & rear
- ◆ Hydraulic flow up to 120 l/min (31.7 gpm)
- ◆ Operating pressure up to 350 bar (5076 psi)

Your local authorised dealer is:



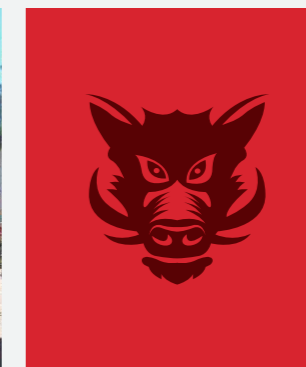
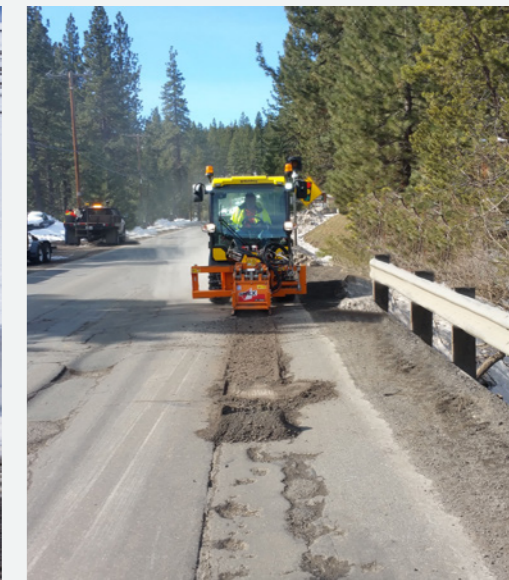
- 🏠 Multihog Global Headquarters,  
Finnabair Business Park, Dundalk, Co. Louth, Ireland.
- ✉ info@multihog.com
- ☎ +353 42 9386738 / 443 852 1842 (US/CA)
- 🌐 www.multihog.com



MX RANGE

Features & Technical Specification

# MX RANGE THE FEATURES



- 1 Heavy duty articulated tractor, ideal for snow clearing, grass mowing, asphalt planing, hedge cutting & much more.
- 2 130 hp (100 kw) Deutz engine, meeting Stage V (Tier 4 final) emissions requirements.
- 3 Fully proportional hydraulics, controlled via ergonomic joystick for smooth operation of attachments.
- 4 Large, air conditioned cabin with 360° visibility for the ultimate operator comfort.
- 5 Very low vibration and noise levels (64dB) ensures high level of operator health and safety.
- 6 7000 kg (15,432 lbs) gross vehicle weight allows heavy attachments to be mounted front and rear.

## POWER, COMFORT & INNOVATIVE DESIGN

